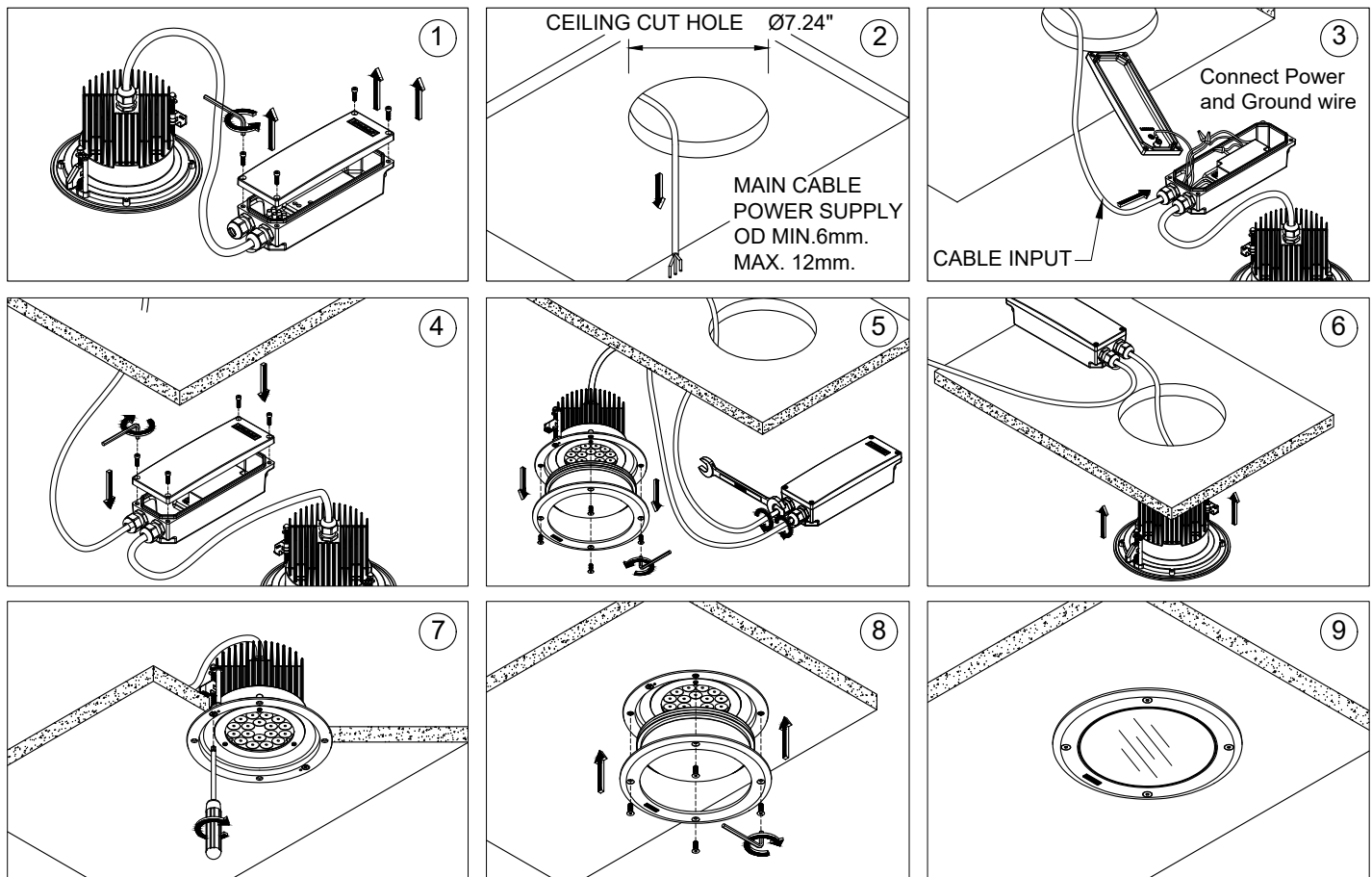
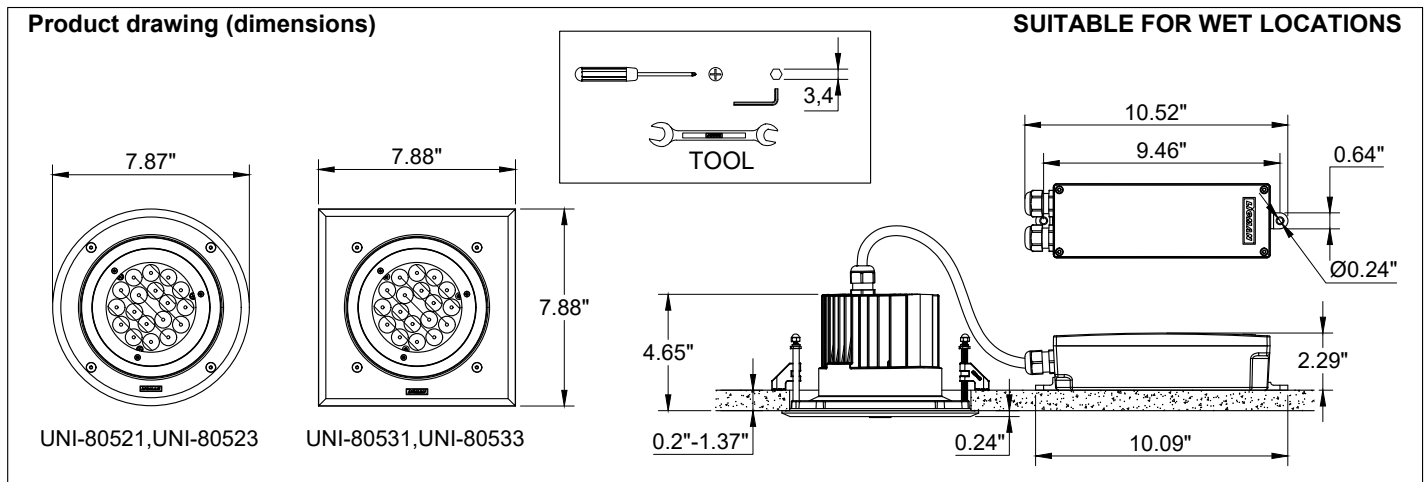


# INSTALLATION AND SERVICE MANUAL

**LIGMAN**  
LIGHTING USA

For Installation of Nikon Recessed Exterior Downlight Round Dia 7.87" and Square 7.87" LED Model. UNI-80521,UNI-80523 and UNI-80531,UNI-80533.



## Notice to installer :

**1.WIRING INSTRUCTIONS Warning : RISK OF FIRE AND ELECTRICAL SHOCK. : FIXTURE MUST BE INSTALLED BY A QUALIFIED ELECTRICIAN ONLY>FIXTURE IS INTENDED FOR INSTALLATION IN ACCORDANCE WITH THE NATIONAL ELECTRICAL CODE, LOCAL AND FEDERAL CODE SPECIFICATIONS. DISCONNECT POWER BEFORE SERVICING.**

**2.This fixture has a VOLTAGE SPECIFIC BALLAST,Check that the supply voltage is the same as the installed ballast voltage.**

**Ligman Lighting USA**

7144 NE Progress Court, Hillsboro  
Oregon, 97124, USA  
Tel : 503 645 0500 | Fax : 503 645 8100

[www.ligmanlightingusa.com](http://www.ligmanlightingusa.com)

UNI-80521 29/03/24 REV.4  
1/1

FM-TS-13-1/13-05-2563/Rev.6